

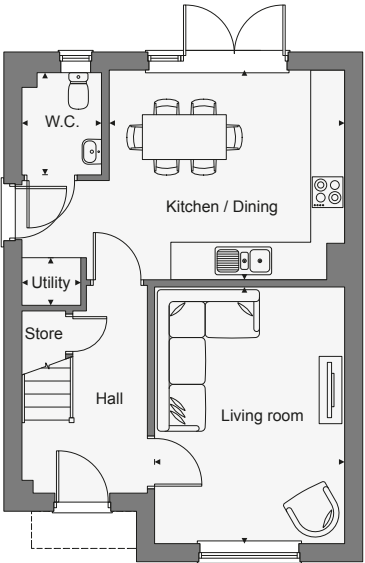
THE FROGMORE

FORTUNA FIELDS, Wingham

Version 2 – 23rd September 2024

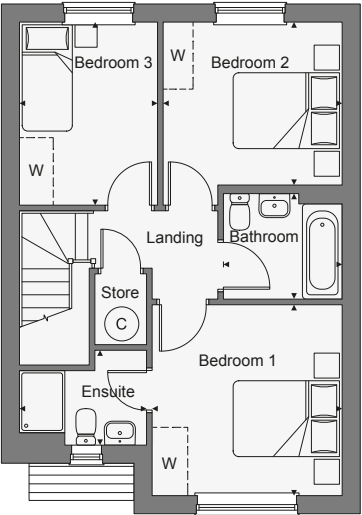
Homes shown: Plots 15, 29 & 47

Homes handed: Plots 2 & 14



Ground Floor

Kitchen / Dining	4.17m x 3.73m	13'7" x 12'2"
Living room	4.58m x 3.39m	15'0" x 11'1"
Utility	1.07m x 0.77m	3'5" x 2'5"
W.C.	1.85m x 1.44m	6'1" x 4'7"



First Floor

Bedroom 1	3.41m x 3.39m	11'2" x 11'1"
Ensuite	2.27m x 1.59m	7'4" x 5'2"
Bedroom 2	3.29m x 2.93m	10'8" x 9'6"
Bedroom 3	3.29m x 2.37m	10'8" x 7'7"
Bathroom	2.14m x 1.86m	7'0" x 6'10"

DISCLAIMER: The information and images contained in this document are intended to convey the concept and vision for the Fortuna Fields development. They are for guidance only, may alter as work progresses and do not necessarily represent a true and accurate depiction of the finished product. Please speak with a Sales Consultant regarding parking and garage locations. This document does not form part of any contract, nor does it form any representation or warranty in relation to the Developer, its Employees, Agents or to the Fortuna Fields development or any of their related developments.